



Sekoya

Borne à LED
LED bollard

Caractéristiques techniques

Matière

Corps : Fonderie d'aluminium extrudé
Module : Fonderie d'aluminium injecté
Semelle : Fonderie d'aluminium coulé

Optique

Type : Module à LED
Fabricant LED : NICHIA
Températures de couleur : 3500 K ou 4500 K
(autres teintes sur demande)

Driver

Emplacement : Dans la borne

Gamme de tensions @ 700mA

S1/M1/L1 : 31,5 V
S2/M2/MR2/L2/LR2 : 63 V
M3/MR3/L3/LR3 : 94,5 V

Couleur standard

Gris 2900 sablé ou Noir foncé RAL 9005

Technical characteristics

Materials

Body: Extruded aluminium
Module: Injected cast aluminium
Base: Cast aluminium

Optical

Type: LED module
LED manufacturer: NICHIA
Colour temperatures: 3500 K or 4500 K
(Other colours on request)

Driver

Location: In the post

Power range @ 700 mA

S1/M1/L1: 31,5 V
S2/M2/MR2/L2/LR2: 63 V
M3/MR3/L3/LR3: 94,5 V

Color Standard

Textured grey 2900 or Dark Black RAL 9005

SEKOYA

Classe électrique

Electrical class

S1/S2/M1/M2/MR2/L1/L2/LR2..... 2
M3/MR3/L3/LR3.....1 (sur demande 2/on request 2)

Indices de protection

Protection index

Bloc optique.....IP 66
Optical unit

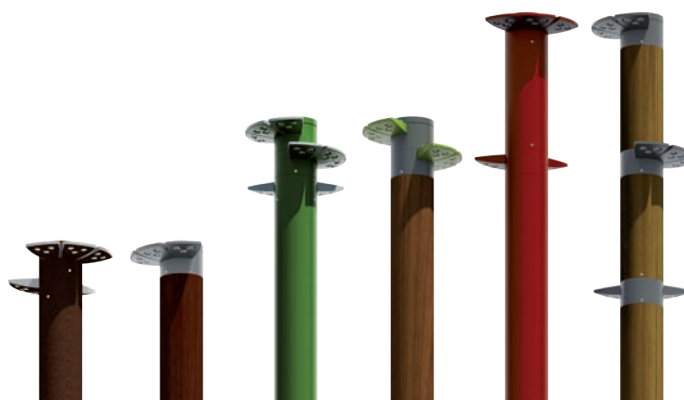
Connecteurs et driver IP 65 minimum dans logement électrique IP 33 / *Connectors and driver IP 65 minimum in electrical housing IP 33*

Énergie de choc.....corps/body.....IK 10
Shock resistance

Poids (kg)

Weight

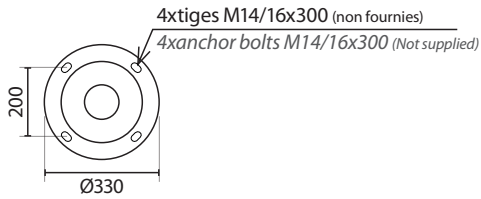
S1	12	M1	20	L1	25
S2	17	M2	25	L2	30
		M3	29	L3	34
		MR2	28	LR2	33
		MR3	35	LR3	40



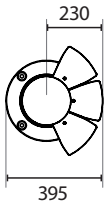
Sekoya

Dimensions (mm) Size

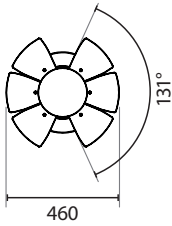
Semelle/Base



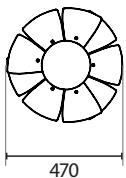
1 module/1 module



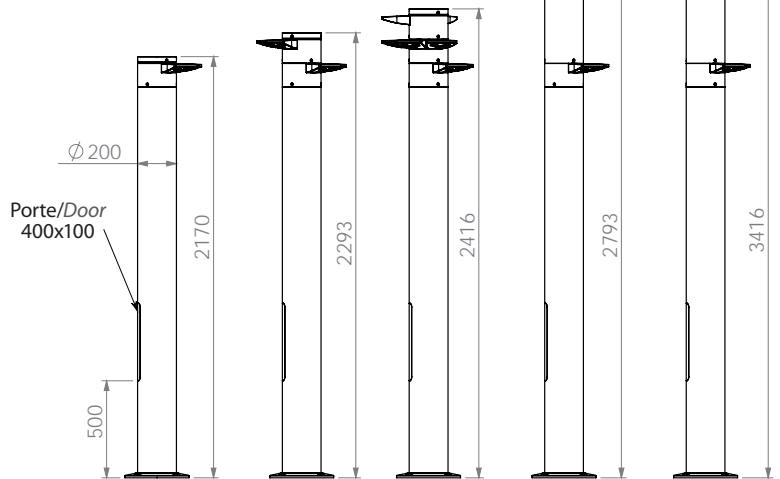
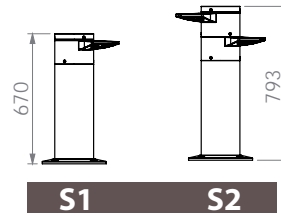
2 modules/2 modules



3 modules/3 modules



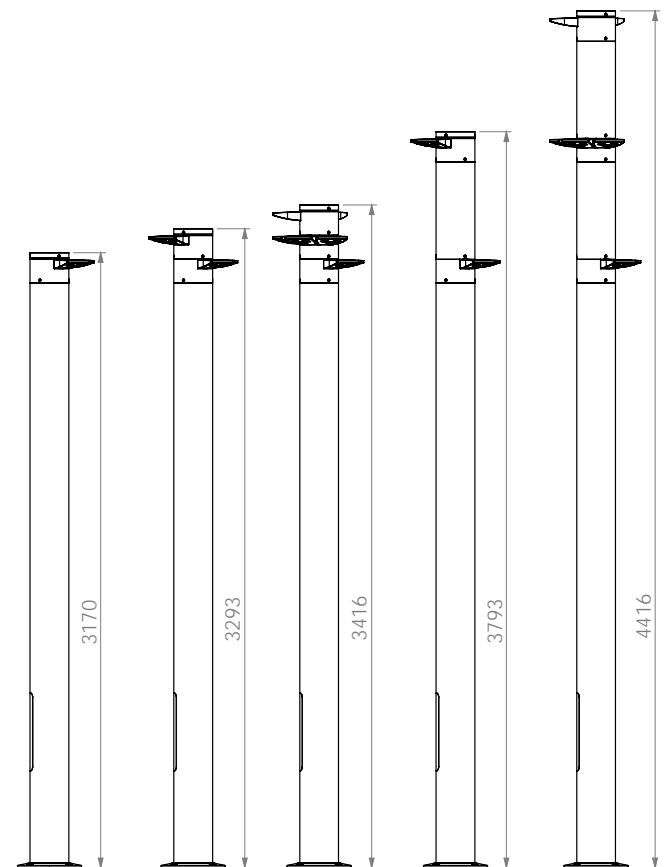
SEKOYA S



SEKOYA M

M1 M2 M3 MR2 MR3

SEKOYA L



L1 L2 L3 LR2 LR3

Sekoya

Caractéristiques photométriques Photometrical characteristics



1 Module

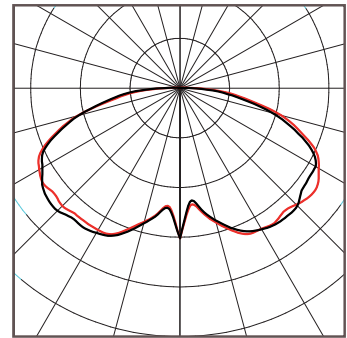
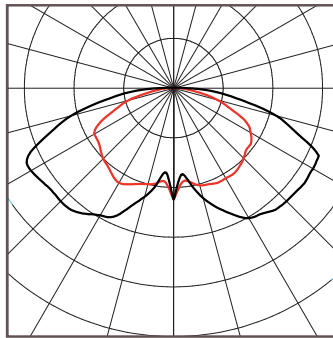
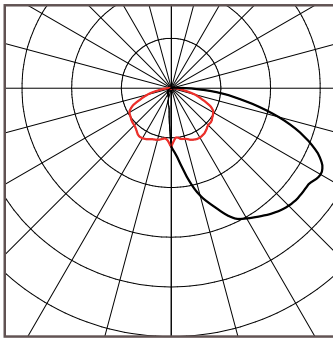


2 Modules

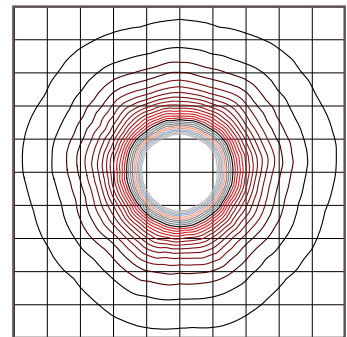
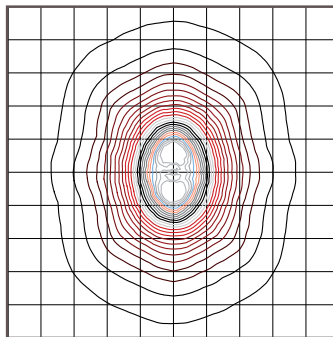
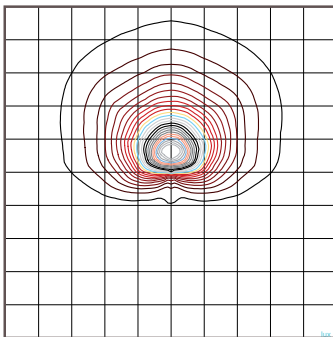


3 Modules

Courbes polaires / Polar curves

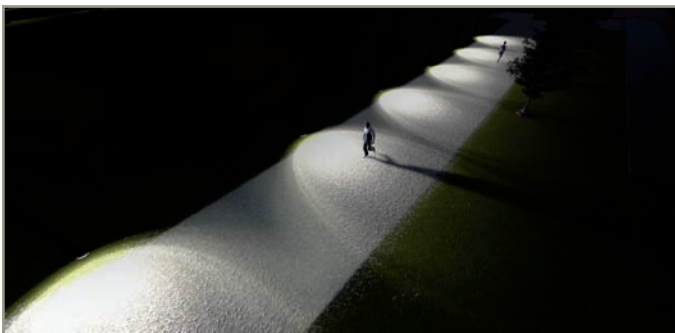


Courbes Isolux / Isolux curves



Projets d'éclairages Lighting projects

1 module / 1 module



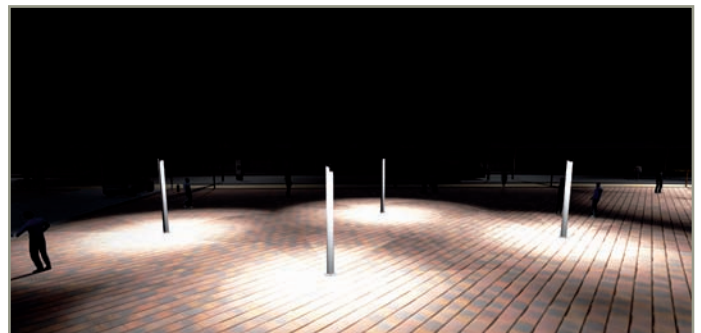
Asymétrique

types : rues, ruelles, chemins piétons...

Asymmetrical

types: street, narrow street, pedestrian path...

2 et 3 modules / 2 and 3 modules



Symétrique circulaire

types : places, placettes, parkings...

Circular symmetrical

types: squares, small squares, parking areas...



RAGNI

B.P.2-06801 Cagnes-sur-Mer Cedex - France
Chemin du Val Fleuri - Vallon des Vaux
06800 Cagnes-sur-Mer - France
Tél.: +33 (0)4 93 31 05 48 - Fax: +33 (0)4 93 14 92 46
i n f o @ r a g n i . c o m



www.ragni.com
www.ragnidurable.com