

ELIPTIKA-LOREZO



RAGNI



ELIPTIKA & LOREZO

Au-delà de ses larges propriétés mécaniques telles que la légèreté, la résistance à la corrosion, la robustesse et la facilité de recyclage, l'aluminium offre une grande souplesse de façonnage et permet ainsi de créer des ensembles originaux.

Le LOREZO offre un profil de section ronde et nervuré qui donnera un aspect soigné à vos ensembles.

Le mât ELIPTIKA possède un système ingénieux de deux rainures fonctionnelles dans son profil elliptique, ce qui lui confère un design unique et innovant ! Il est le produit idéal pour vos projets devant intégrer fixations d'équipements, signalétiques ou accessoires afin d'éviter toute pollution esthétique causée par des cerclages et autres systèmes de fixation.

In addition to the mechanical properties of aluminium, such as its light weight, corrosion resistance, strength and recycling possibilities, it is also easily worked, which gives considerable scope for original creations.

The LOREZO offers a round-section, ribbed rod, which will give your equipment a sophisticated and streamlined look.

The ELIPTIKA mast has an ingenious system of two functional grooves in its elliptical section, which makes for a unique and original design. It is the ideal product for any project involving the mounting of equipment, indicator panels or accessories, avoiding the unattractive addition of banding and other attachment systems.

Mâts Aluminium structurés

Structured Aluminium poles





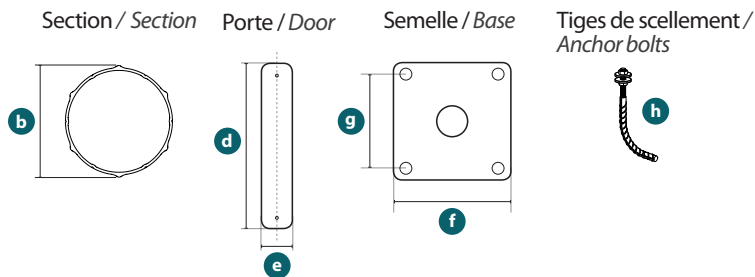
LOREZO

Matière : Aluminium / **Materials:** Aluminium

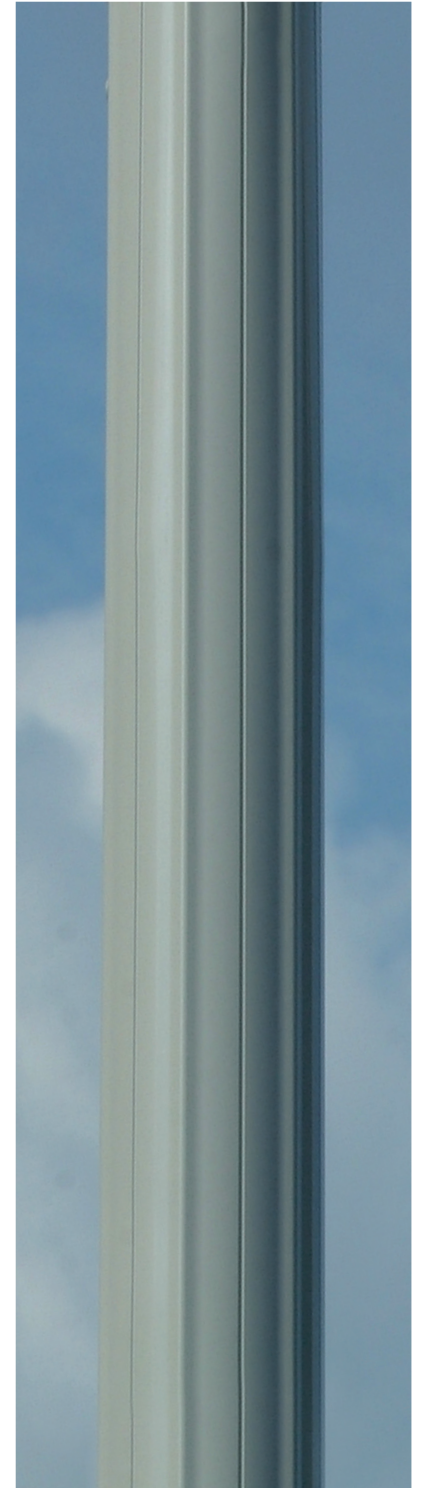
Dimensions (mm) / Size (mm)

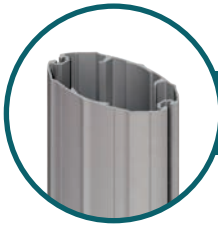
	3,5m	4m	5m	6m	7m	8m	9m	10m	11m
--	------	----	----	----	----	----	----	-----	-----

	3,5m	4m	5m	6m	7m	8m	9m	10m	11m
a Hauteur / Height	3500	4000	5000	6000	7000	8000	9000	10000	11000
b Section / Section	145 ou 175			175					
c Dist. sol/porte / Dist. floor/door					500				
d Hauteur de porte / Door height					400				
e Largeur de porte / Door width					95				
f Semelle / Base					400				
g Entre-axes / Center to center					300				
h Tiges de scellement / Anchor bolts					M18/20x400				



Proposition d'ensembles / Suggestion for ensembles





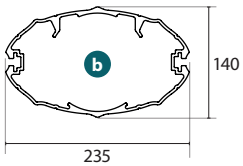
ELIPTIKA

Matière : Aluminium / **Materials:** Aluminium

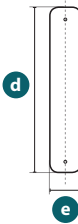
Dimensions (mm) / Size (mm)

	4m	5m	6m	7m	8m	9m	10m
a Hauteur / Height	4000	5000	6000	7000	8000	9000	10000
b Section / Section	140x235						
c Dist. sol/porte / Dist. floor/door	600						
d Hauteur de porte / Door height	350						
e Largeur de porte / Door width	95						
f Semelle / Base	400						
g Entre-axes / Center to center	300						
h Tiges de scellement / Anchor bolts	M18/20x400						

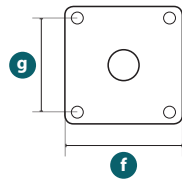
Section / Section



Porte / Door



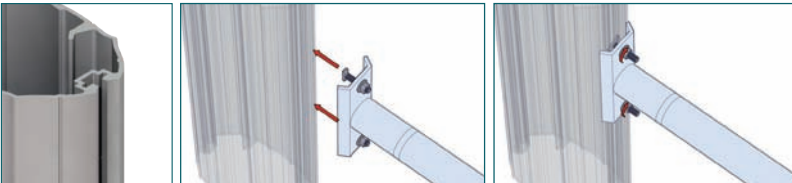
Semelle / Base



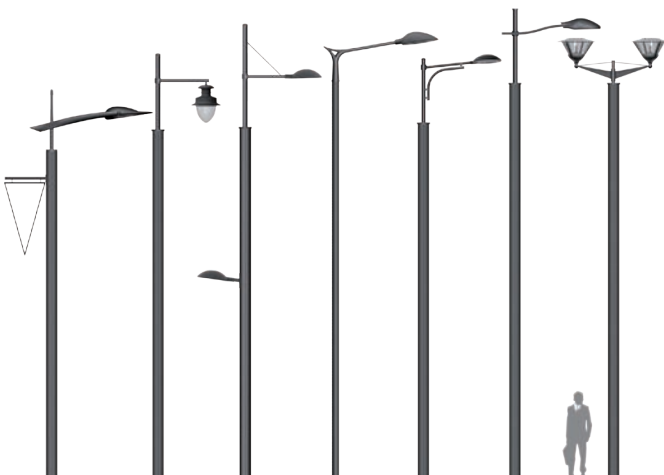
Tiges de scellement / Anchor bolts



Rainure technique pour fixation accessoire / Technical groove for accessory mounting



Proposition d'ensembles / Suggestion for ensembles



ELIPTIKA



LOREZO



RAGNI

BP2 - 06801 CAGNES SUR MER CEDEX - FRANCE
Chemin du Val fleuri - Vallon des Vaux
Tél. +33(0)4 93 31 05 48 - Fax. +33(0)4 93 14 92 46
i n f o @ r a g n i . c o m

www.ragni.com
www.ragnidurable.com